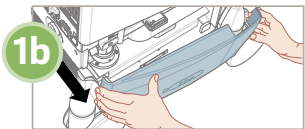
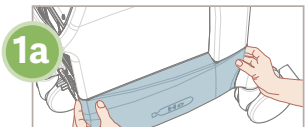
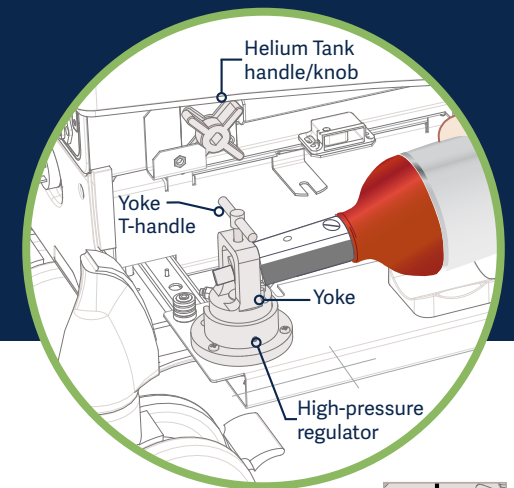
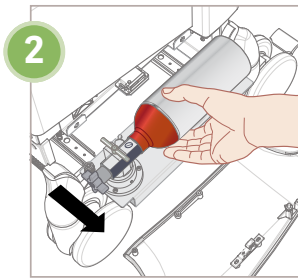


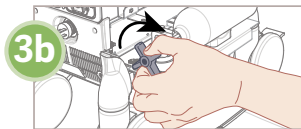
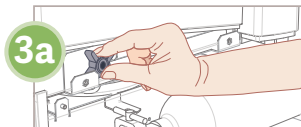
How to change the Helium Tank on the Cardiosave IABP



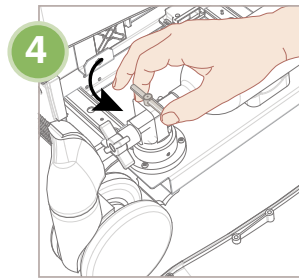
1a Grasp both sides of helium tank panel and
1b Pull out to open.



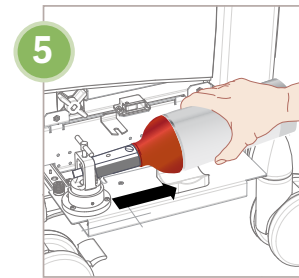
2 Grasp helium tank and slowly slide drawer out.



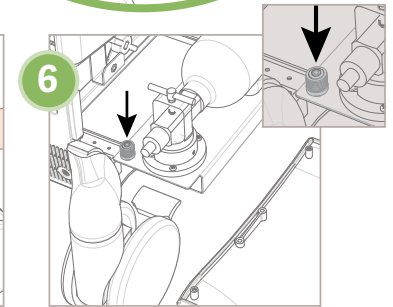
3a Remove helium tank knob from Holder and
3b Attach to left end of helium tank, then fully turn clockwise to close.



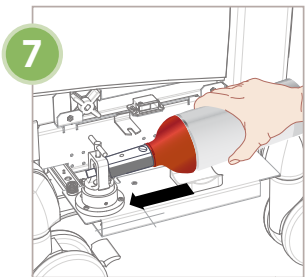
4 Slowly loosen yoke T-handle counter-clockwise (some helium may escape).



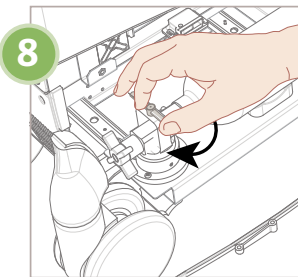
5 Remove helium tank.



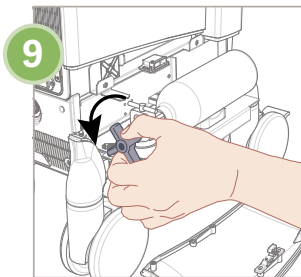
6 Replace washer, if available.



7 Install fresh helium tank.



8 Fully tighten yoke T-handle clockwise.



9 Slowly open helium tank knob counter-clockwise (listen for any escaping helium).



10 Slide helium tank drawer in and replace helium tank panel.



11 Verify full helium level via icon on Monitor Display.