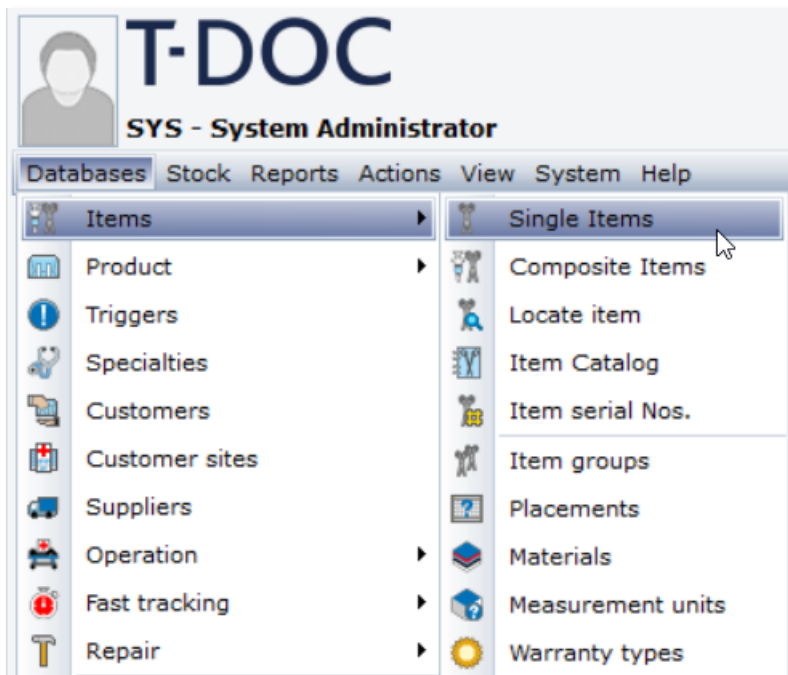
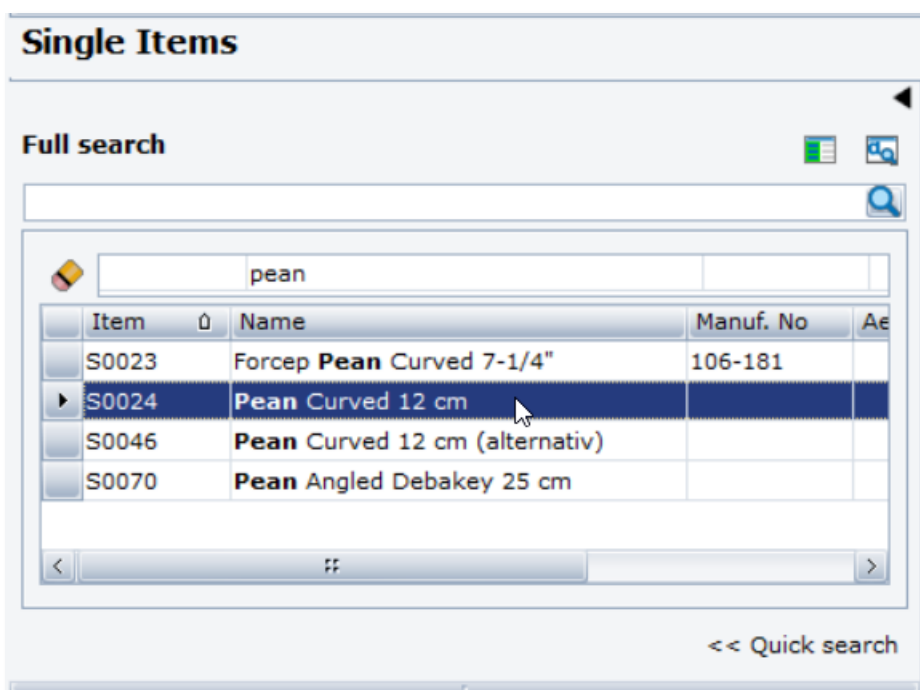


T-DOC v16 Create a New Peel packed Product

1. To create a Peel packed product, click **Databases > Items > Single Items**.



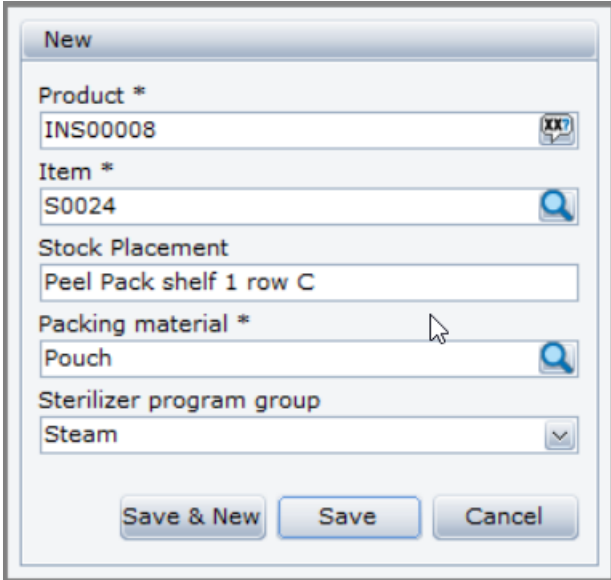
2. Use full search to find the single item you want to pack. Double-click the correct item.



3. Once the Single item is selected, click  to create a product from this instrument.

4. In the dialog box type in the processing information for the peel pack. Click .


Note: To edit fields that appear on create refer to **Set Obligatory Fields** T-DOC Quick Guide.

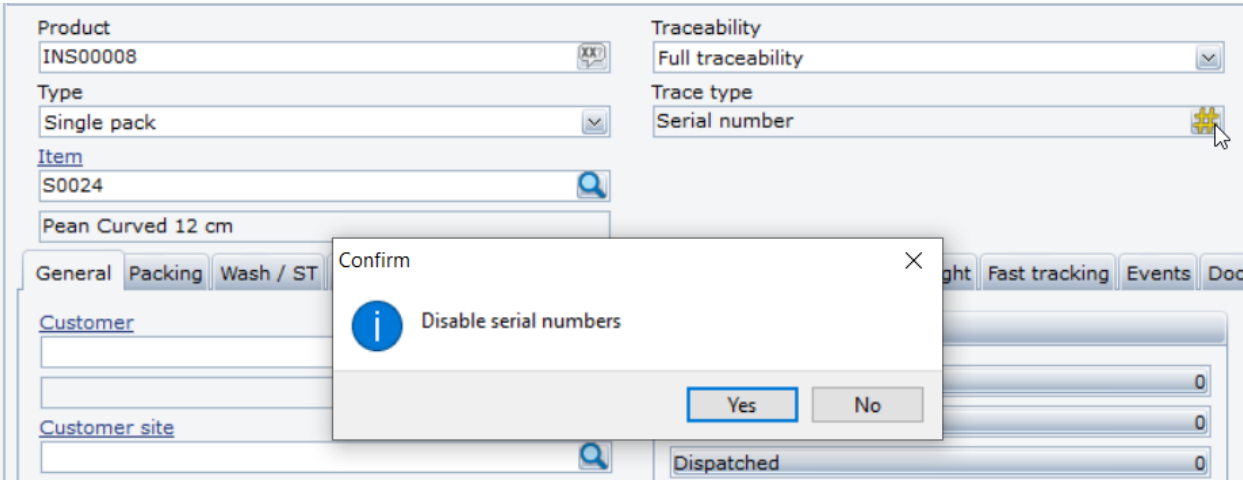


The 'New' dialog box contains the following fields and controls:

- Product *: INS00008
- Item *: S0024
- Stock Placement: Peel Pack shelf 1 row C
- Packing material *: Pouch
- Sterilizer program group: Steam

Buttons at the bottom: Save & New, Save, Cancel.

5. Click  to disable serial numbers and click yes.



The main configuration screen shows:

- Product: INS00008
- Type: Single pack
- Item: S0024
- Traceability: Full traceability
- Trace type: Serial number

A 'Confirm' dialog box is overlaid with the message: 'Disable serial numbers'. It has 'Yes' and 'No' buttons.

6. Click traceability to disable return registration so item can be repacked without.

The screenshot shows a software interface for product configuration. The title bar reads "INS00008 - Pean Curved 12 cm". Below the title bar is a toolbar with various icons. The main area is divided into two columns. The left column contains fields for "Product" (INS00008), "Type" (Single pack), "Item" (S0024), and "Pean Curved 12 cm". The right column is titled "Traceability" and contains a dropdown menu set to "Traceable to customer". Below this, there are two checkboxes: "Requires batch registration" (checked) and "Requires return registration" (unchecked and highlighted in blue). A mouse cursor is pointing at the "Requires return registration" checkbox.

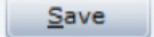
7. Click in the Total count text box to enter the amount allowed on stock at a time.

Note: Once the amount is reached staff will not be allowed to pack this item until some are dispatched.
You may want to consider placing a large number in this box. (i.e., 9999)

The screenshot shows a "Stock overview" section with a table of counts. The table has two columns: the category and the count. The categories are "Packed", "On stock", "Dispatched", and "Repair", all with a count of 0. Below these is a "Total count" field with a value of 8. At the bottom, there is a "Stock Placement" section with the text "Peel Pack shelf 1 row C".

Category	Count
Packed	0
On stock	0
Dispatched	0
Repair	0
Total count	8

Stock Placement
Peel Pack shelf 1 row C

8. Click  .