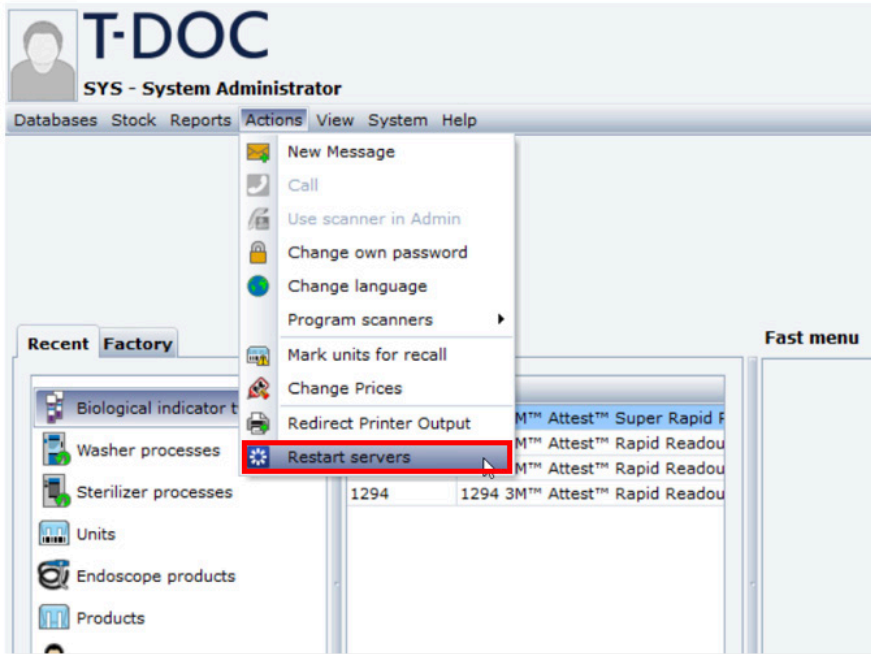
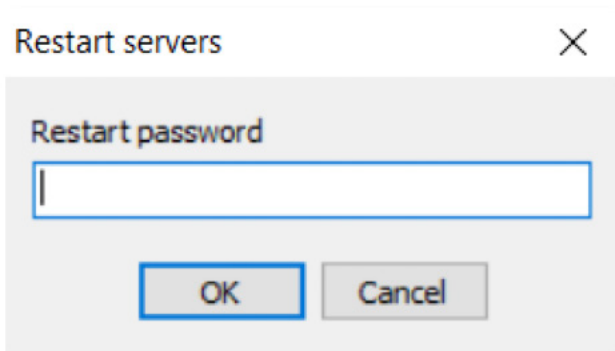


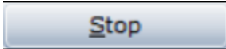
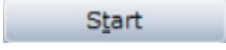
T-DOC v16 Restart Servers

1. Click **Actions** > **Restart servers**



2. Type "T-DOC" in the dialog box



3. Click **T-DOC Application Server**
4. Click 
5. Click 
6. You have restarted the T-DOC server



Getinge is a registered trademark of Getinge AB, its subsidiaries, or affiliates in the United States or other countries. • Copyright 2022 Getinge AB or its subsidiaries or affiliates. • All rights reserved.

Sales Office, USA • 1 Geoffrey Way • Wayne, NJ 07470 • USA • Tdocsupport.us@getinge

www.getinge.com

GETINGE 

MCV00108818 REVA
EXP04/24