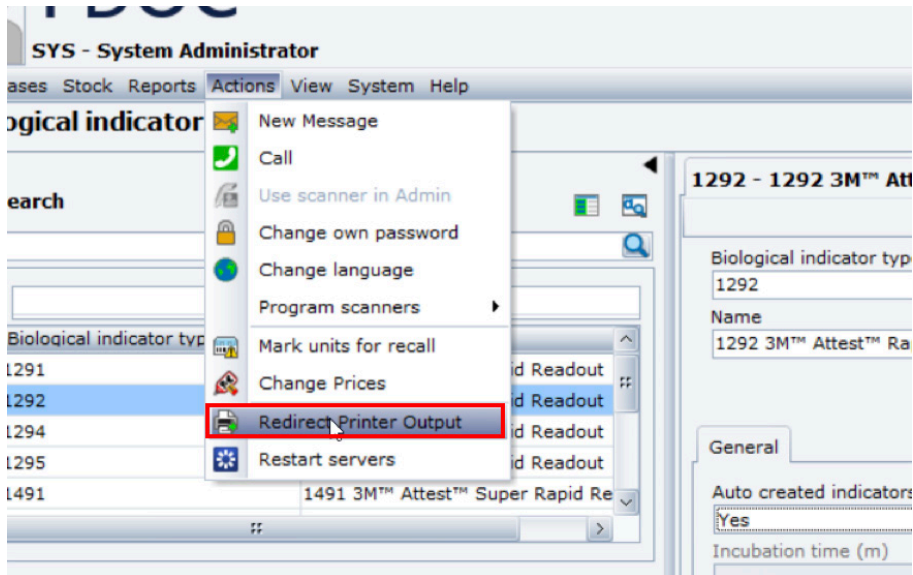
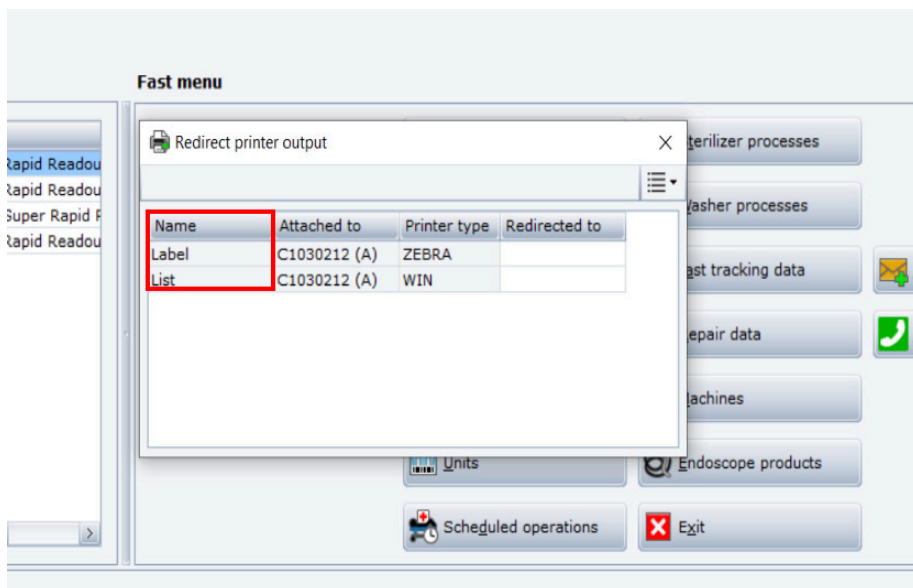


# T-DOC v16 Redirect Printers

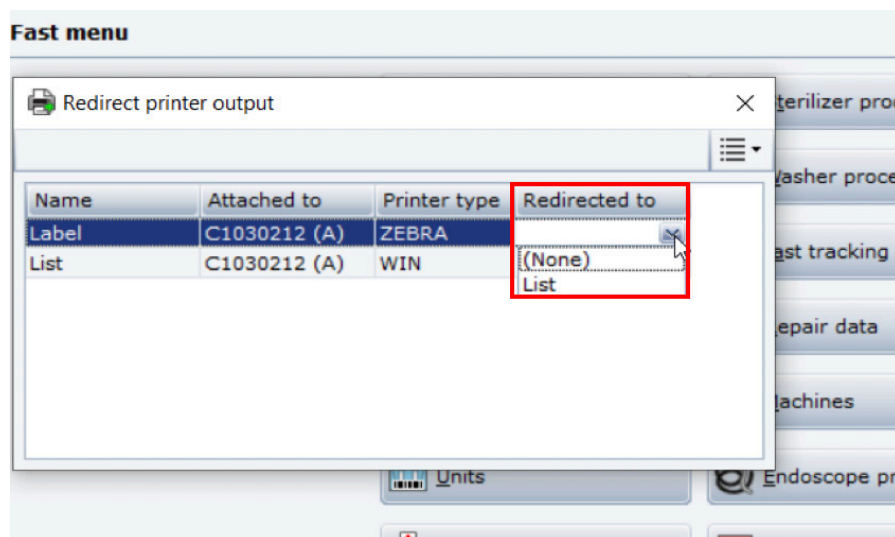
1. Click **Actions > Redirect Printer Output**



2. Identify the printer you want to redirect in the **Name** column.



3. In the **Redirected to** column, click in the field adjacent to the printer you are redirecting to reveal the drop-down menu
4. Click on the name of the printer you will use in its place
5. Click the **X** to close dialog
6. You have now redirected all output from the printer in the **Name** column to the printer in the **Redirected to** column  
*Note: To undo this change click on the same printer you selected in the **Redirected to** column and select **(None)***



Getinge is a registered trademark of Getinge AB, its subsidiaries, or affiliates in the United States or other countries. • Copyright 2022 Getinge AB or its subsidiaries or affiliates. • All rights reserved.

Sales Office, USA • 1 Geoffrey Way • Wayne, NJ 07470 • USA • Tdocsupport.us@getinge

[www.getinge.com](http://www.getinge.com)

**GETINGE** 

MCV00108817 REVA  
EXP04/24