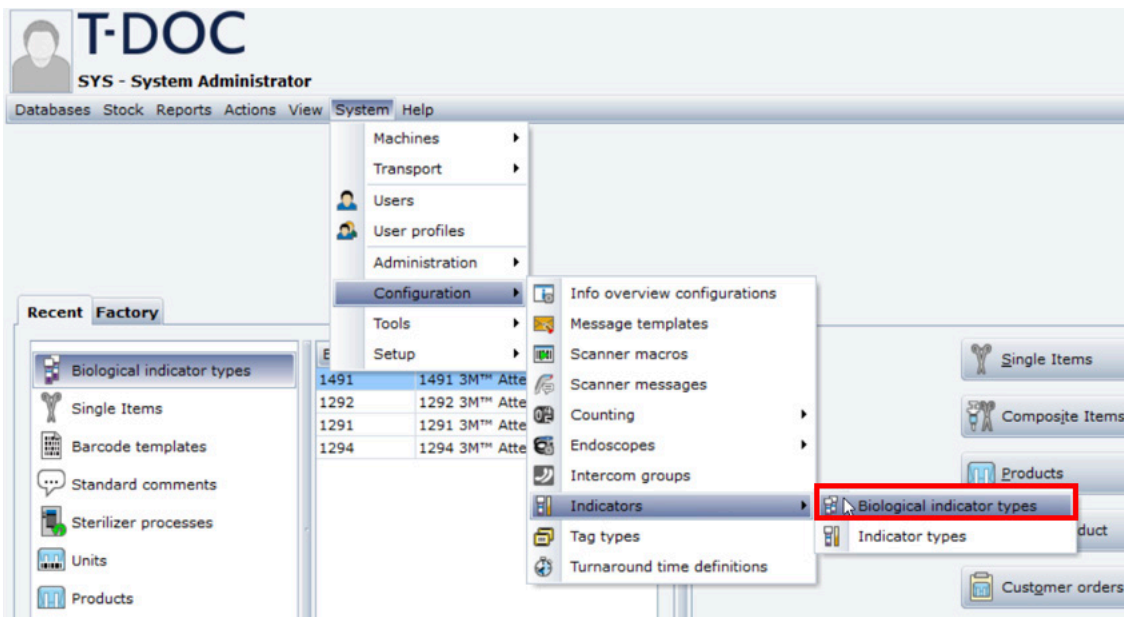


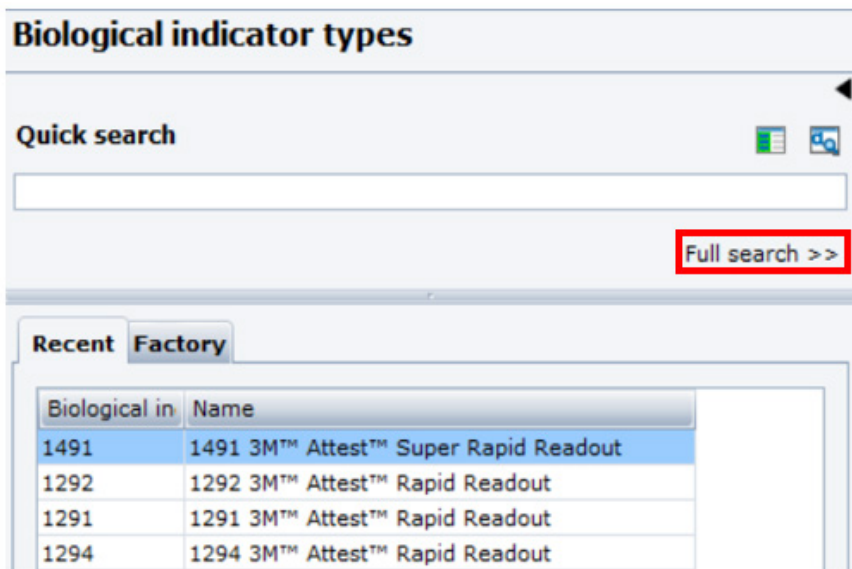
T-DOC v16

Change incubation time for Biological Indicators

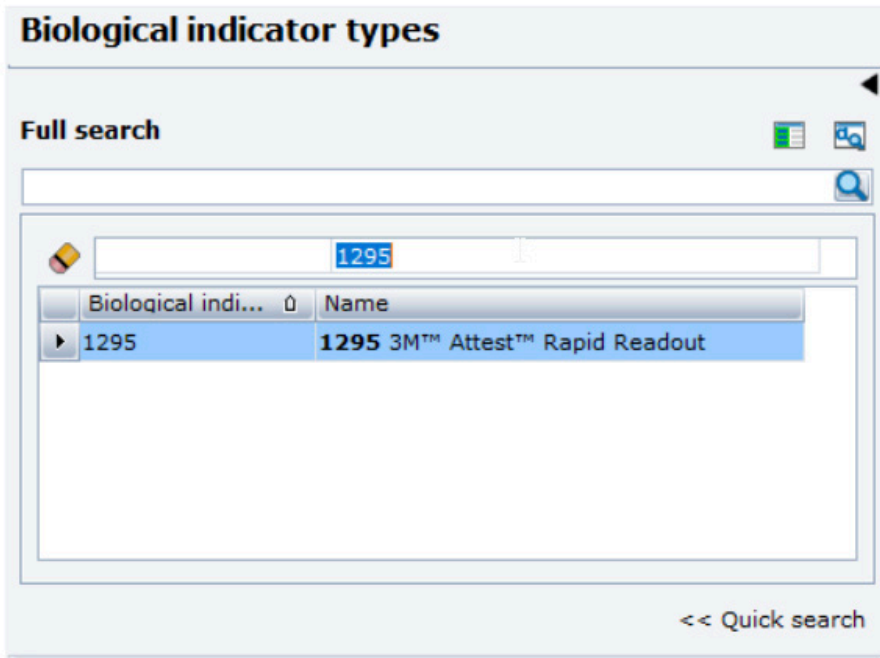
1. Click **System > Configuration > Indicators > Biological indicator types** to display the search options




2. Click **Full search**

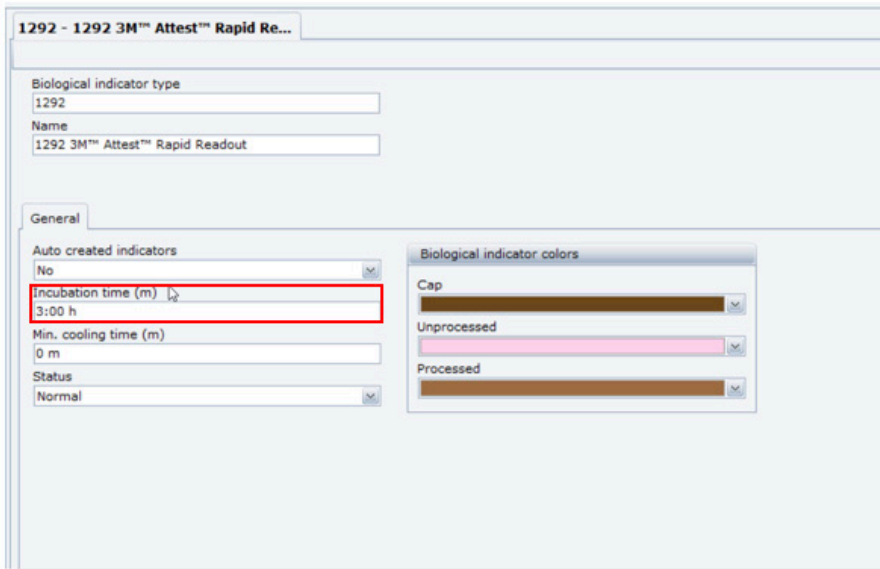


3. In the Full search text box, type the specific phrase (like **Name** or **Biological indicator**), press **Enter** to display the search results and double-click the BI you want to change



4. In the **Incubation time (m)** textbox, enter the correct time and click 

*NOTE: For change to take effect you will need to **Restart Servers**. See the Restart Servers Quick Guide for instructions*



Getinge is a registered trademark of Getinge AB, its subsidiaries, or affiliates in the United States or other countries. • Copyright 2022 Getinge AB or its subsidiaries or affiliates. • All rights reserved.

Sales Office, USA • 1 Geoffrey Way • Wayne, NJ 07470 • USA • Tdocsupport.us@getinge

www.getinge.com

GETINGE 

MCV00108810 REVA
EXP04/24